

# Guide for Foreigners Relocating to Singapore

Moving abroad is always daunting. There are so many factors to consider – where do you even begin? In this guide, we summarize the key information you'll need to know before deciding to relocate to Singapore.

# Types of Passes Available

The types of passes available are divided into several main categories according to your profile and purpose of visit. These are the main categories: **professionals, skilled and semi-skilled workers, trainees and students, and family members.**

## 1

### Professionals

- Employment Pass
- Entre Pass
- Personalised Employment Pass

## 2

### Skilled and Semi-Skilled Workers

- S Pass
- Work Permit for Foreign Workers
- Work Permit for Foreign Domestic Workers
- Work Permit for Confinement Nannies
- Work Permit for Performing Artists

## 3

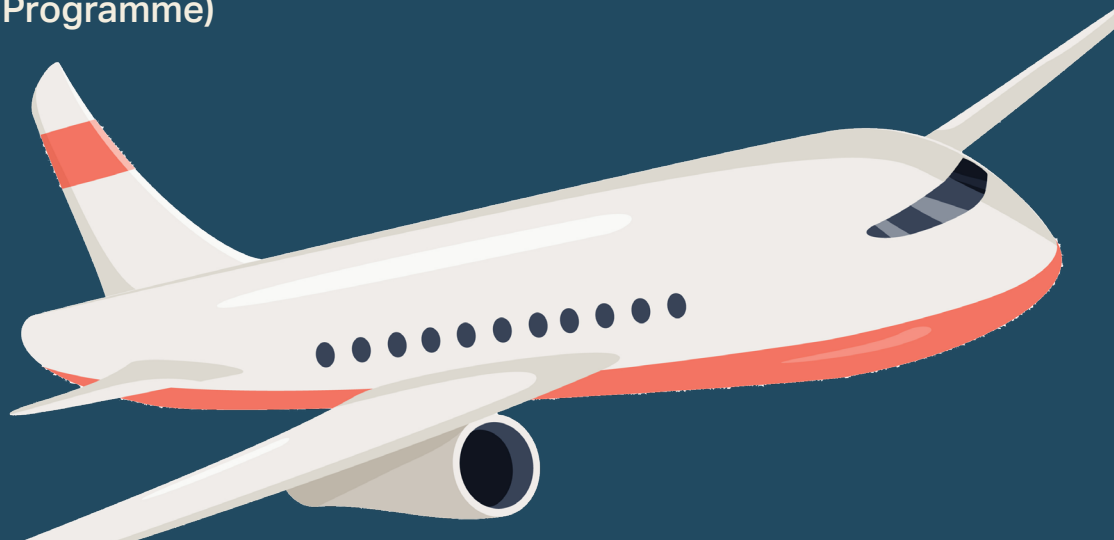
### Trainees and Students

- Training Employment Pass
- Work Holiday Pass (Under Work Holiday Programme)
- Work Holiday Pass (Under Work and Holiday Visa Programme)

## 4

### Family Members

- Dependant's Pass
- Long Term Visit Pass



# Types of Property Available

In Singapore, both renting and purchasing of properties are available options to foreigners looking to relocate here. When it comes to renting, there are no restrictions – regardless of whether the property is private or public. However, public housing owners are not permitted to rent out their property unless they've met a minimum 5-year occupancy period. So before committing to a lease, make sure that they have met this criteria!



## Properties Available for Purchase

### Restricted

Property can only be bought with permission from relevant authorities.

- Vacant Residential Land
- Terrace House
- Semi-Detached
- Bungalow
- **Sentosa\***

\*This area is meant for foreigners to purchase landed properties in. The approval to own a Sentosa Cove landed Property is usually given within 48 hours.

### Non-Restricted

Additional taxes are often levied on foreign buyers.

- Condominium
- Flat unit
- Executive Condominium Units (after privatisation)
- HDB Shop Houses (if eligibility conditions are met)

## Additional Costs

On top of usual taxes, most foreigners pay an added stamp duty in the form of the **Additional Buyers Stamp Duty (ABSD)** which is an added tax of 25% of your property price, payable within 2 weeks of completing the purchase of any property

If you are a US National or a National or Permanent Resident from Switzerland, Liechtenstein, Norway and Iceland, you will pay the same tax rates as a Singapore citizen.

# Schooling Options

## Government Schools

Children must be Student's pass holders and go through the International Student Admissions process in order to be admitted into public schools governed by the Ministry of Education (MOE).

Foreign students are welcome to join public schools. However, they can expect to be put on a waitlist if the number of locals applying is high.

Local primary school fees go up to \$763 per month for foreign students.

The Academic Year runs from January to December. There are holidays in September, December, March, and June.

## Private International or Boarding Schools

Annual school fees, for the first year of education, can range from **S\$13,000 to S\$50,000**, excluding application and other administrative fees.

The academic year is determined by the school itself. The most popular academic calendar is August to July, which aligns with northern hemisphere schools.

### The Top 4 Most Popular Schools

1. Hwa Chong Institution Boarding School
2. United World College South East Asia
3. Raffles Institution Boarding
4. Anglo-Chinese School

## Private Schools Available for Different Nationalities

### India

Global Indian International School

### Korea

Singapore Korean International School

### Japan

Waseda Shibuya Senior High School

### Australia

Australian International School Singapore

### Europe

German Europe School Singapore  
International French School  
Tanglin Trust School  
Dover Court International School

### United States of America

Stamford American International School  
Singapore American School

# Healthcare Options

Foreigners are not entitled to subsidised healthcare services from the government. Hence, the difference in cost between government and private options are negligible. Most expatriats prefer private healthcare due to the shorter waiting time and higher quality service.

## Government Healthcare Facilities

- Government Hospitals for inpatient services
- Polyclinics for outpatient services

## Private Healthcare Facilities

- Private Hospitals (JCI-accredited)
- Private clinics

| Service  | Cost          |
|--|---------------|
| Routine Check-ups with a General Practitioner, with medication | \$20 to \$40  |
| Blood tests and X-Rays   | \$50 to \$80  |
| Specialised Consultation in a Private Clinic                   | \$75 to \$125 |
| Heart Bypass Surgery   | \$25,000      |
| Hip Replacement Surgery  | \$13,000      |
| Knee Replacement Surgery                                       | \$15,000      |

| Private Hospitals               | Government Hospitals           |
|---------------------------------|--------------------------------|
| Farrer Park Hospital            | Alexandra Hospital             |
| Concord International Hospital  | Changi General Hospital        |
| Gleneagles Hospital             | Khoo Teck Puat Hospital        |
| Mount Alvernia Hospital         | KK Women’s & Children Hospital |
| Mount Elizabeth Novena Hospital | Ng Teng Fong General Hospital  |
| Mount Elizabeth Hospital        | National University Hospital   |
| Parkway Easy Hospital           | Singapore General Hospital     |
| Raffles Hospital                | Tan Tock Seng Hospital         |
| Thomson Medical Centre          | Singapore National Eye Centre  |
|                                 | Singapore Cancer Centre        |
|                                 | Singapore Heart Centre         |
|                                 | National Skin Centre           |

# Popular Areas for Expats to Live

## Orchard Road

- Heart of retail shopping
- Wide variety of restaurants, cafes, and eateries
- Recreational facilities and services
- Very close to the CBD area

## Tanglin

- Wide range of housing options available
- Near to Orchard Road
- Near to Botanic Gardens

## Holland Village

- Many cafes, ice cream, and dessert parlour
- Myriad of health and beauty services
- Filled with bars and pubs
- Local and Western restaurants where many expatriats like to gather and hang out at
- Wide range of housing options available
- Is an MRT station

## Changi Business Park

- A mixture of tech, data and software enterprises
- Research and Development-intensive facilities
- Easy access to the CBD via Expo MRT

## East Area

Bedok, Tampines, Flora Drive, Siglap

- Has a community village spirit
- Wide range of local and western restaurants
- Recreational facilities and services
- Wide range of housing options available

## Central Business District

Anson Road, Chinatown, Neil Road, Raffles Place, Shenton Way, Tanjong Pagar

- The business district, filled with office buildings
- High-end restaurants, bars and cafes catering to the corporate crowd

## South West Area

Buona Vista, Pasir Panjang, Clementi, Dover, Bukit Timah

- Houses many top schools from primary, secondary, and tertiary-level institutes
- Neighbourhood malls
- Key amenities and recreational facilities
- Wide range of restaurants and 24-hour eateries
- Wide range of housing option available

## Sentosa

- Best neighbourhood feel
- Great access to recreational activities such as golfing and playing at the beach
- Near to attractions like Resort World Sentosa and Universal Studios Singapore
- Right next to VivoCity, Singapore's largest mall
- Convenient for those who work in CBD

# Discover Singapore

Singapore may be a little red dot, but there's so much about the island to discover and explore – if only you knew where. So here's an exciting list of things to do, and places to see!

## *Nature Trails*

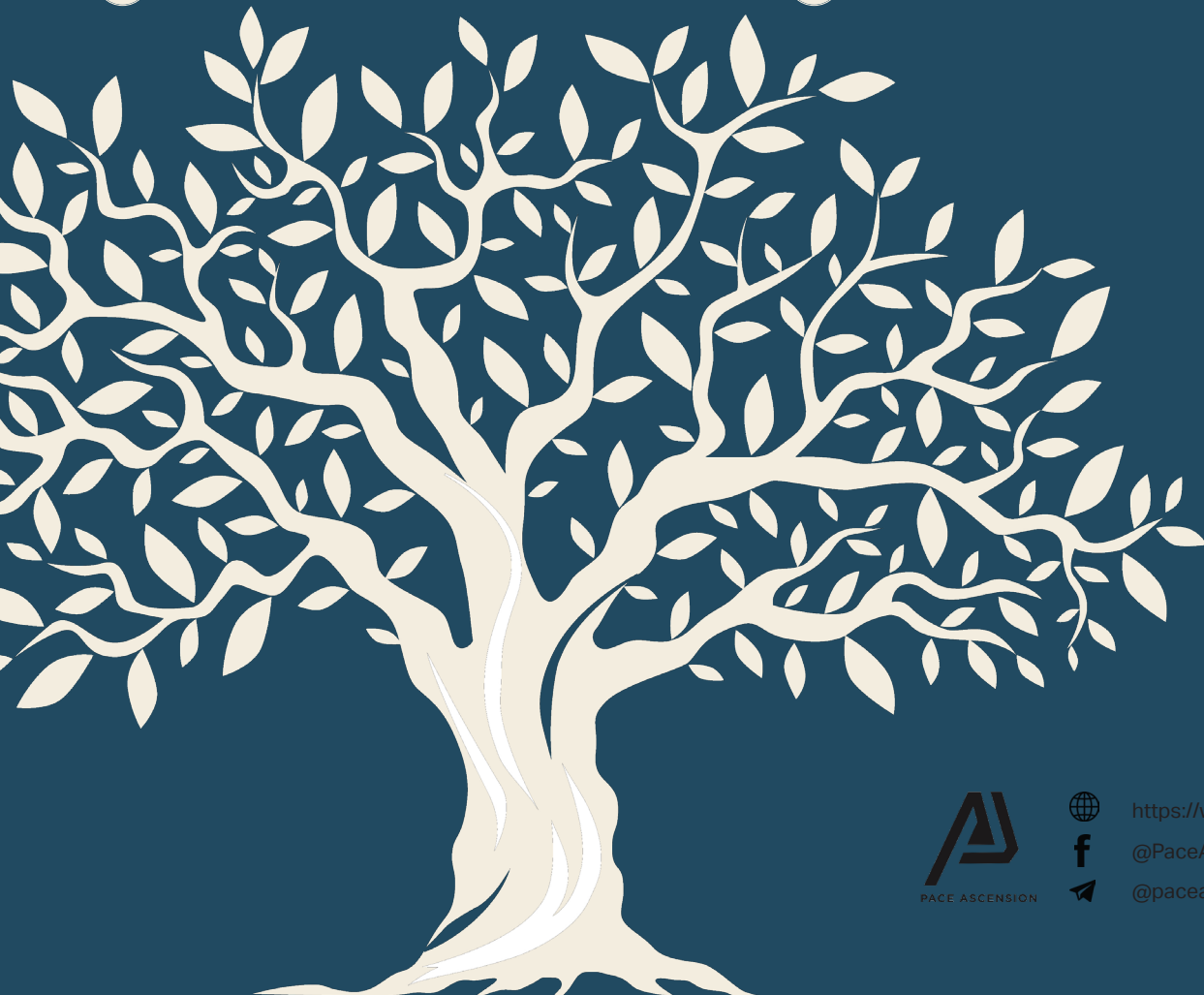
These trails are great for exploring, hiking, exercising, and simply seeing the natural landscape that Singapore has to offer. Bring a friend or make one along the way!

- 1 Botanic Gardens
- 2 MacRitchie Reservoir
- 3 Sungei Buloh Wetlands
- 4 Singapore Zoo & River Safari
- 5 Punggol Waterway Park
- 6 Coney Island
- 7 Pulau Ubin

## CULTURAL LANDMARKS

Singapore's deep history and heritage can't just be explored over a weekend. Head down to these different sights to immerse in the local melting pot of people from all walks of life!

- 1 Chinatown
- 2 Little India
- 3 Kampong Glam
- 4 Kampong Buangkok
- 5 Haw Par Villa
- 6 Clarke Quay & Boat Quay
- 7 Marina Bay Sands



<https://www.paceascension.com/>

@PaceAscensionGroup

@paceascension